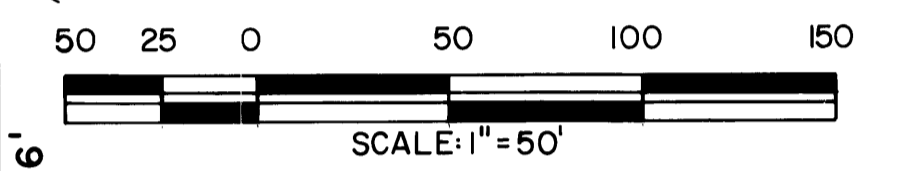
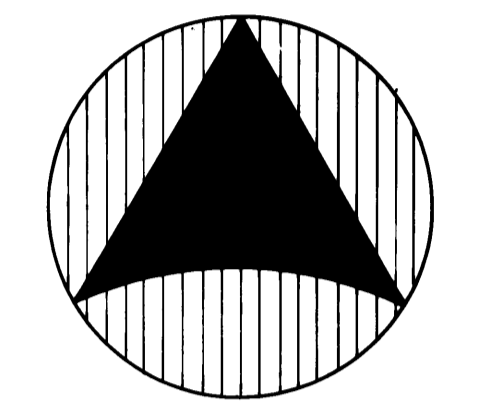
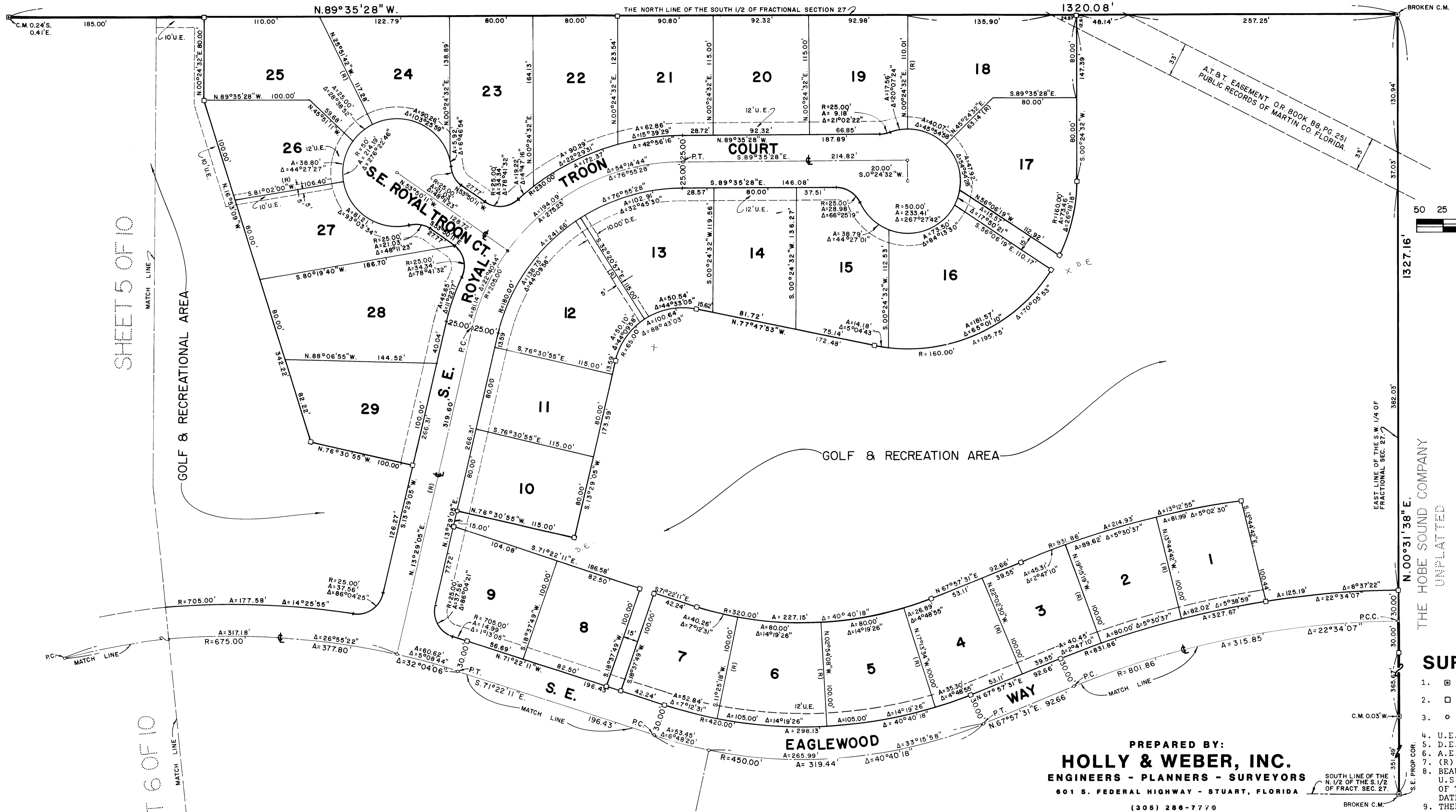


EAGLEWOOD, P.U.D.

BEING A PART OF SECTIONS 27 AND 28, TOWNSHIP 39 SOUTH, RANGE 42 EAST, MARTIN COUNTY, FLORIDA

PL B 9
Pg 26

THE HOBE SOUND COMPANY UNPLATTED



SURVEY NOTES:

- INDICATES FOUND PERMANENT REFERENCE MONUMENT (P.R.M.)
- INDICATES SET PERMANENT REFERENCE MONUMENT (P.R.M.)
- INDICATES PERMANENT CONTROL POINT (P.C.P.)
- U.E. INDICATES UTILITY EASEMENT
- D.E. INDICATES DRAINAGE EASEMENT
- A.E. INDICATES ACCESS EASEMENT
- (R) INDICATES RADIAL LINE
- BEARINGS SHOWN HEREON ARE RELATIVE TO U.S. 1 (S.R. #5), FLORIDA DEPARTMENT OF TRANSPORTATION SECTION #89010-2102, DATED MAY 23, 1938.
- THERE WILL BE NO LOT SPLITS EXCEPT TO CREATE LARGER LOTS.

PREPARED BY:
HOLLY & WEBER, INC.
 ENGINEERS - PLANNERS - SURVEYORS
 601 S. FEDERAL HIGHWAY - STUART, FLORIDA
 (305) 286-7770

SHEET 4 OF 10